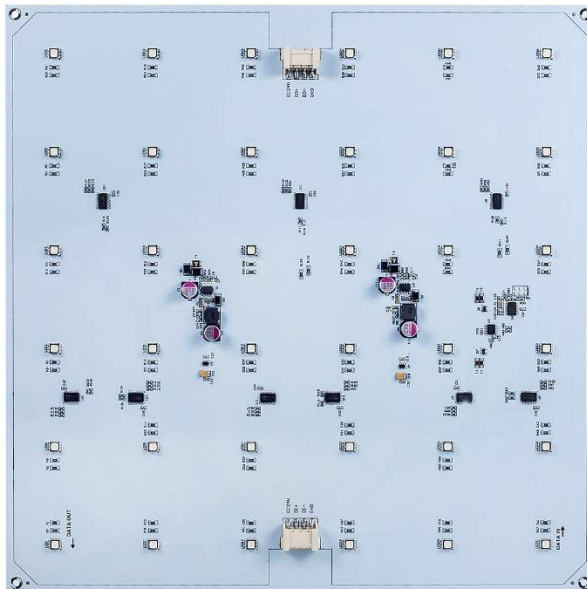


DMX Pixel Board-DP250/DP300

Static White/RGB

Client	
Project	
Order Code	
QTY	



Our manual will describe the installation and mounting of the product as well as a description of how to use it.

Please read and understand this manual in its entirety before using the product.

Product Warranty is void if product is not installed as per installation instructions and in compliance with all local and provincial codes.

SAFETY RECOMMENDATIONS AND WARNINGS

Do not handle except at a static free workstation or wearing anti-static wrist strap

Do not make modifications or alter the product

Keep away from flammable material.

Do not use products if cable or connector are damaged

Do not drop, knock or shake the products. Rough handling can damage the electronics.

Do not use any silicone or other chemicals on outside surface.

Do not use chemicals or abrasives to clean the luminaires as this may void the warranty.

Ensure installation complies with local electrical rules and regulations.

Ensure mains input power is surge protected

Do not connect or disconnect the luminaire while the power is connected.

Connectors are to be kept clean and dry at all times.

Input Voltage range 15-24VDC

Colordreamer Products are cooled by convection. Provide adequate ventilation by providing free air flow around.

If the ambient temperature around the luminaires exceeds 55degrees, do not use the products and turn off the system.

Power off the luminaires during service or when not in use.

For best color mixing results, ensure the boards have the same orientation.

Product Overview

The Colordreamer DP250/DP300 LED Pixel Board features 36 individually controllable SMD LEDs on a 6 X 6 matrix with 41.66mm or 50mm pitch. Size 250X250mm or 300X300mm available.

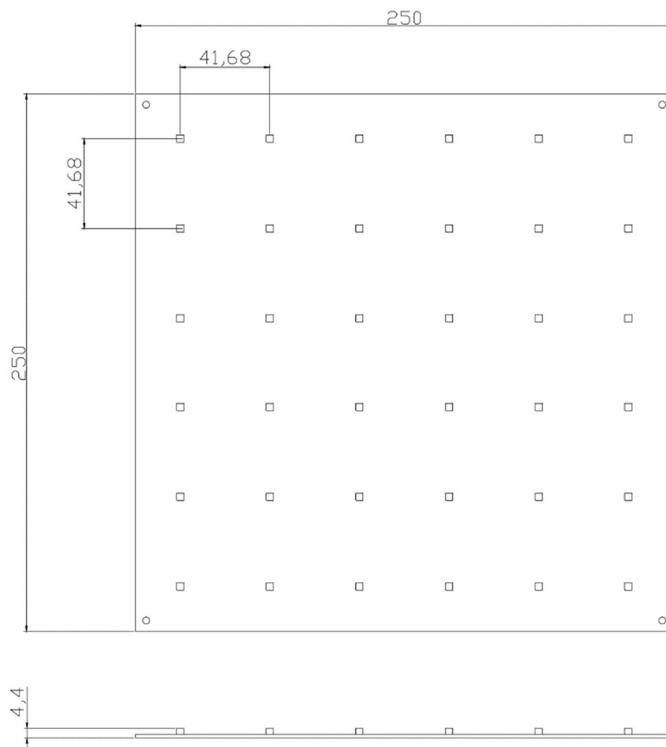
Product Specification

Models	DP2503603	DP3003603
LED		
Color	RGB	RGB
Light Source	Epistar or CREE LED	Epistar or CREE LED
Color	R:619-624nm G:520-540nm B:460-480nm	R:619-624nm G:520-540nm B:460-480nm
LED QTY	36LEDs	36LEDs
Performance		
Lumen Output	Update soon	Update soon
Efficacy	Update soon	Update soon
Beam Angle	115°	115°
Electrical		
Input Voltage	15-24VDC	15-24VDC
Power Consumption	8W	8W
Control		
Protocols	DMX512 Control	DMX512 Control
PWM Frequency	1KHz@16-Bit Grayscale/256KHz@8-Bit Grayscale	
Addressing	Auto Addressing or Manual Addressing with Colordreamer Addressing Tool	
Physical		
Material	FR4 PCB Board	
Finish Color	Black/White	
Optics	Open	
Dimensions (LXWxH)	250*250mm	300*300mm
Cable Entry	Side Entry	
Mounting	Surface Mounted	
Packing	Package Size 53*36*36cm	
Environment		
Operating Temperature	-30°C to +50°C	
Storage Temperature	-40°C to +70°C	
Humidity	0-90% non-condensing	
IP Rating	Dry, Indoor/IP20	
Certification and Safety		
Certification	CE/ETL	
Warranty	2Years Limited Warranty from the Date of Manufacture Contact us if you need extended warranty	

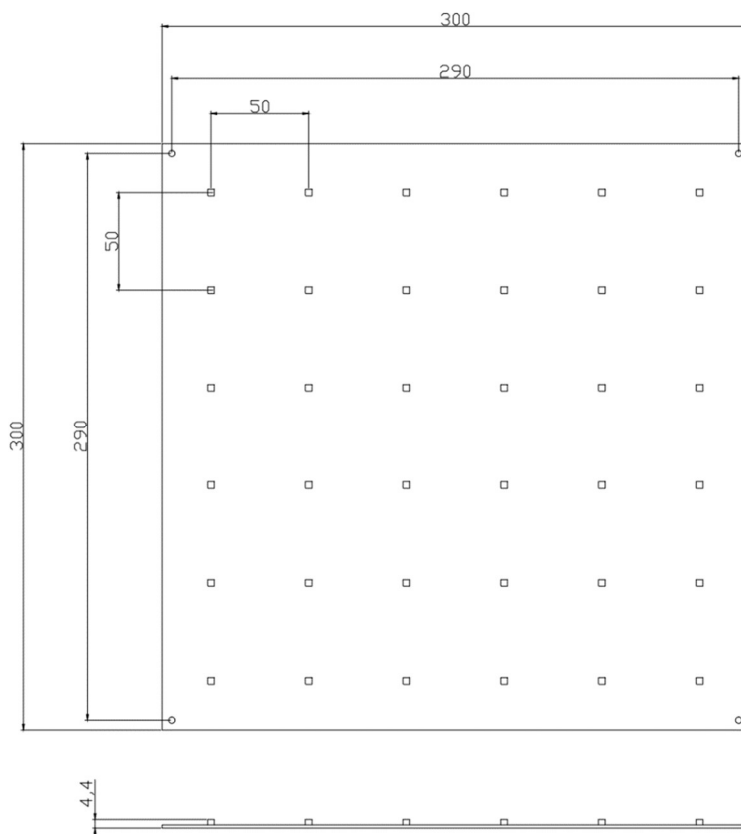
Remark: The given data of CCT, beam angles, lumen output and electrical power are typical value. Due to the tolerances of the production process and the electrical components, the values can vary up to 10%.

Dimension

250X250mm

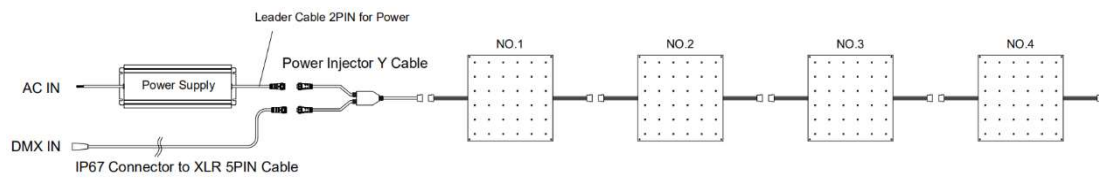


300*300mm

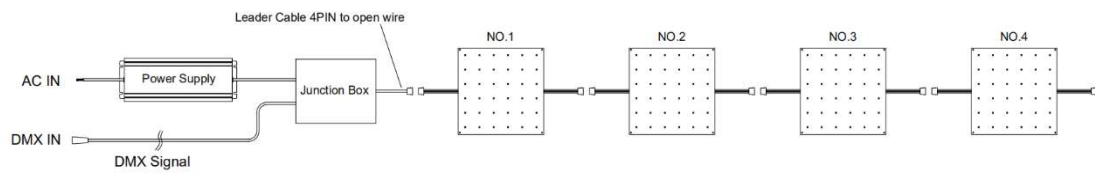


System Diagram

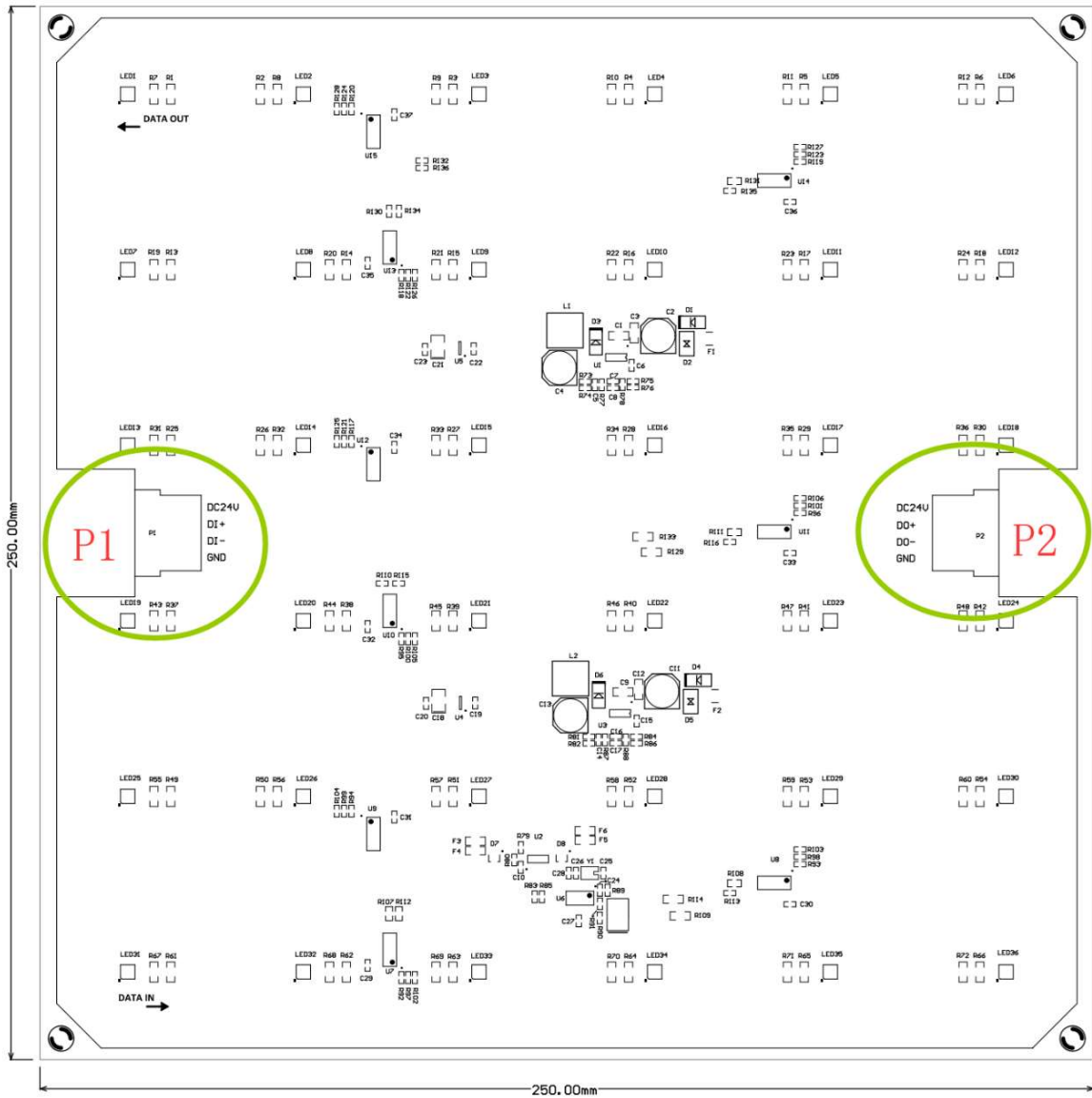
Option1:



Option2:



The wiring diagram shows only typical connection. Actual wiring depends on production configuration and installation on site.



P1(IN)	Description	P2(OUT)	Description
DC24V	24VDC	DC24V	24VDC
DI+	DMX IN+	DO+	DMX Out+
DI-	DMX IN-	DO-	DMX Out-
GND	GND	GND	GND

Maximum Circuit Loading-Single Run

Maximum Current Through cables and connectors ≤5A

LED Power	Maximum Leader Cable Length from Junction Box to First Fitting	Max Daisy Chain Length with Signal Power Feed
8W per dot	20meter	4pcs

Values are based on end to end spacing. Extended cables or jumper cables will affect loading.

Accessories List (Need Order Separately)

Name	Order Code	Description
Leader Cable	67E2FB-20CM	IP67 Connector,20cm Long 2PIN Female to open wire
Leader Cable	67E2FB-5M	IP67 Connector,5Meter Long 2PIN Female to open wire
Leader Cable	20E4FB-20CM	IP20 Connector,20cm Long 4PIN Female to open wire
Leader Cable	20E4FB-5M	IP20 Connector,5Meter Long 4PIN Female to open wire
Jumper Cable	67E2M2F-5M	IP67 Connector,5Meter Long 2PIN Male to 5PIN Female
Jumper Cable	20E4M4F-5M	IP20 Connector,5Meter Long 4PIN Male to 4PIN Female
IP67 Connector to XLR Cable	67E4F5XM-20CM	20CM Long 4PIN IP67 Female Connector to XLR 5PIN Male Cable
IP67 Connector to XLR Cable	67E4F5XM-5M	5M Long 4PIN IP67 Female Connector to XLR 5PIN Male Cable
Power Injector Y Cable	67T4M4F2M	IP67 Connector,15CM 4PIN Male for LED;15CM 4PIN Female for LED;15CM 2PIN Male for Power